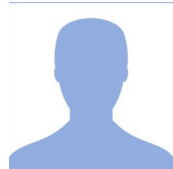


Just Believe



Luke 8:40-56

Mike Churchill

What did Jairus and the woman have in common?

They had a _____

They were _____

They had _____

- _____
- _____
- _____

What do we see about Jesus?

Take Home Truth

My faith is based on who Jesus is, not on my own _____.

Today's Core Belief Discussed: Jesus Christ
 "I believe that Jesus Christ is the Son of God, conceived by the Holy Spirit, born of the virgin – that He suffered, was crucified and buried, but rose on the third day, after which He ascended into heaven where He sits at the Father's right hand." (from Hebrews 1:3)



Deeper Connection Study

Word spread quickly regarding Jesus' amazing teaching and authority. It seemed that every place he went a crowd would follow him and people would cry out for his attention. In this next section of miracle stories, two particular people approached Jesus at different times concerning two very unique but dire needs. What Jesus did, as well as how and why he did it, is instructive for his followers to truly understand his mission.

Today's Core Belief discussed: Jesus Christ.

Read Luke 8:40-56 [par. Matthew 9:18-26; Mark 5:21-43]

1. How do you think the two main characters viewed Jesus? Why did they seek him and how were they rewarded?
2. What evidence is seen concerning Jesus' power? How does his power increase the faith of those who follow him (cf. John 11:1-14, 38-44)?
3. How is the compassion of Jesus revealed in these events?
4. In what ways do you show compassion for those who are broken? How do you show Christ's love to outcasts?
5. How is God glorified in the restoration of the broken and hurting?
6. Is there any physical, emotional, or relational healing you are seeking from the Lord? What do you desire for God to do in these areas of your life? How can you grow in faith as you wait upon God?

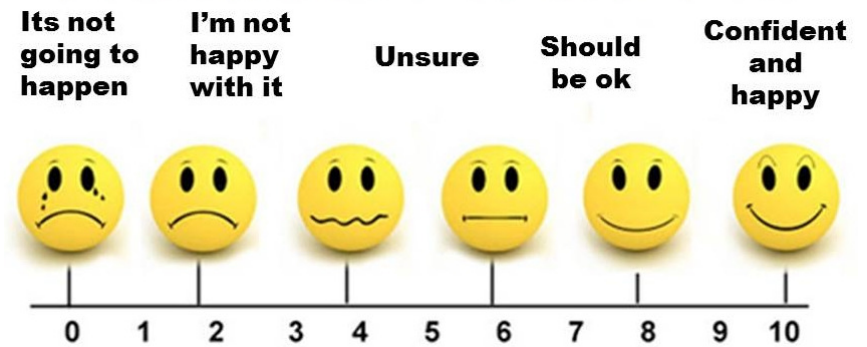
PRAYER TO THE POINT: Praise God for Jesus' compassion and power to heal the infirmed. Pray for God to bring healing in your life in any area that is broken or hurting. Ask God to grow your faith as you wait upon him.

Faces of Faith



7.30.2017

Luke 8:40-56



On a scale of 1 to 10, where is your faith in God's plan for your life?

When it comes to trusting in God's plan for our lives it would be nice to say that our faith is always at a 10. But the truth may be that sometimes you find yourself having less faith. Why is that? What's the secret to keeping your faith in God's plan at a high level of trust?